



Andy Beshear
GOVERNOR

TRANSPORTATION CABINET

200 Mero Street
Frankfort, Kentucky 40601

Jim Gray
SECRETARY

December 11, 2023

CALL NO. 110
CONTRACT ID NO. 235308
ADDENDUM # 2

Subject: Washington County, STP BRZ 9030 (407)
Letting December 14, 2023

(1) Added - Detail Sheet - Page 97a of 144

Proposal revisions are available at <http://transportation.ky.gov/Construction-Procurement/>.

If you have any questions, please contact us at 502-564-3500.

Sincerely,

Rachel Mills,

A handwritten signature in black ink that reads "Rachel Mills".

Rachel Mills, P.E.
Director
Division of Construction Procurement

RM:mr
Enclosures

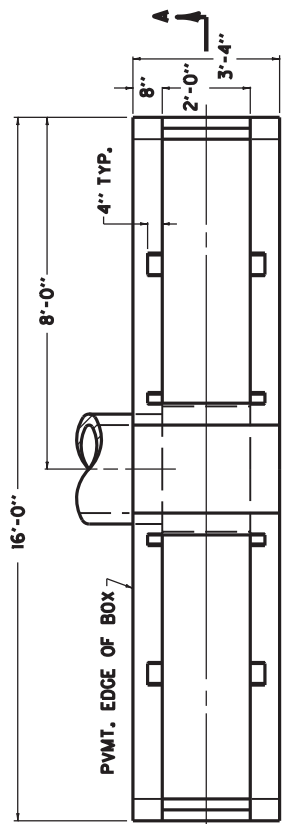
COUNTY OF	ITEM NO.

NOTES

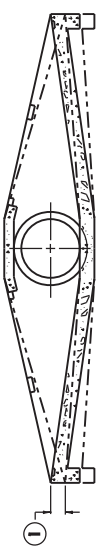
ITEM CODE BID ITEM UNIT
 1728 SAFETY BOX INLET-18 IN DBL SOB-5 EACH
 1729 SAFETY BOX INLET-24 IN DBL SOB-5 EACH

THE UNIT BID FOR EACH STRUCTURE SHALL INCLUDE ALL CONCRETE, STRUCTURAL STEEL GRATING, EXCAVATION, LABOR AND INCIDENTALS NECESSARY FOR ITS CONSTRUCTION AS DETAILED ON THIS SHEET.

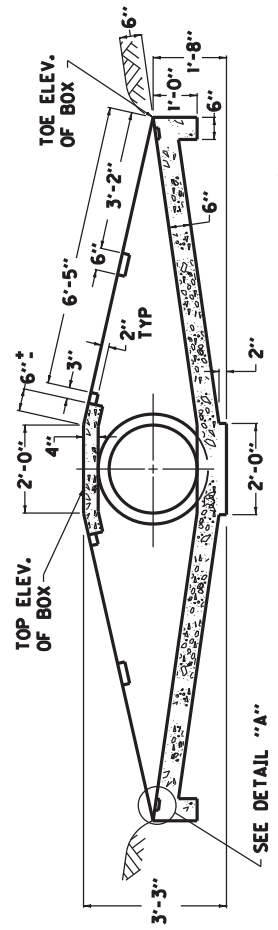
① TOE OF BOX SHALL BE RAISED OR LOWERED TO FIT EXISTING FIELD CONDITIONS.
 ② ANGLE BETWEEN BOX WALLS MAY VARY TO FIT EXISTING FIELD CONDITIONS.



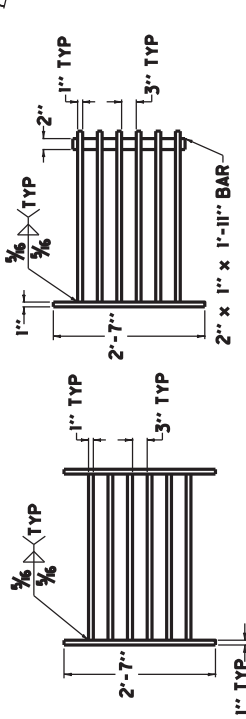
PLAN VIEW



SECTIONAL VIEW

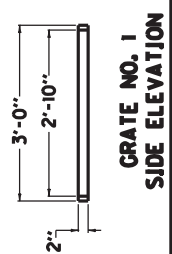


SECTION A-A

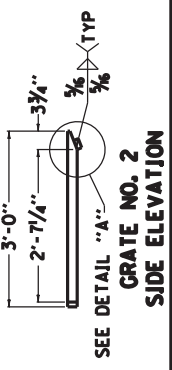


**GRATE NO. 1
PLAN VIEW**

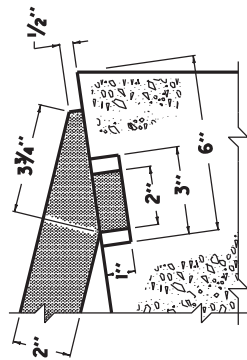
**GRATE NO. 2
PLAN VIEW**



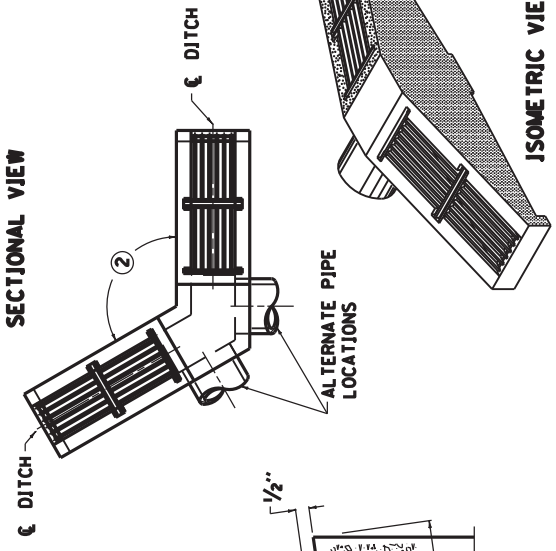
**GRATE NO. 1
SIDE ELEVATION**



**GRATE NO. 2
SIDE ELEVATION**



DETAIL "A"



ISOMETRIC VIEW

APPROXIMATE QUANTITIES			
CLASS	GRATE	LBS. STRUCTURAL STEEL	TOTAL POUNDS
"A"	NUMBER	EACH GRATE	
2.07	1	145	596
	2	153	